

CRUISE NEWS

The monthly newsletter of the Cruising Club of Charleston



Commodore

Elizabeth Beckmann



Vice Commodore

Paul Hensarling



Secretary

Lynn Menches



Treasurer

Joann Lape



Navigator

Carl Beckmann, Jr.



Past Commodore

Mike Fauss

NEXT MEETING

April 7, 6:30 pm, Point Grill

Speaker: John Brophy

President, Pierside Boatworks

Topic: What to Expect When You
Haul Your Boat Out

THIS MONTH'S CRUISE

Hamlin Sound--April 9-10

Sail ho!

Out with the Old and in with the New. Before I start, I would like to personally thank Mike Fauss for his contributions to the CCC during his tenure as Commodore. As I steer the Helm into the 40th year of the CCC, I face a few challenges in tightening up the ship, while keeping it on even keel.

With the help of past commodore, Bob Kelley, I have created a listing of duty descriptions for each crew member of the helm. This was done to provide more continuity and the ease of understanding what is needed for fellow members to be more involved in the club. If anyone would like a copy of this, please let me know.

In starting, I am looking for a volunteer to Chair the "Fun Committee". This person would be responsible for coordinating the Luau, Christmas Party, Oyster Roast and Change of Helm, with the help of various subcommittees for each event. Please read further in the newsletter for the "Help Wanted" ads.

The cruise schedule has been posted on the website as well as in this newsletter. Please peruse the schedule and let the navigator know if you would like to be Host Boat. He has some shortages to fill. If we do not have a "host boat" for a particular cruise, the cruise will commence; however, the "liquor locker" may be MIA.

There has been a lot of discussion within the past few months about the "interpretation" of the current by-laws detailing the award of the burgees and annual awards given. The navigator has taken on the task to present this to the Steering Committee for discussion and clarification.

Our new webmaster, Ed Geiger, has done a FABULOUS job on creating a more useable website for the club. I encourage you all to view the website at www.cruisingclubofcharleston.com. This website is for the members of the club. Please feel free to send pictures, links, and other useful items to Ed for inclusion. Ed however does have a "Poetic License".

As with the annual Change of Watch comes the annual membership renewal. Please contact Eddie Sykes or Joann Lape with dues and any updated information, especially phone numbers and email addresses. Deadline for renewing is May 31, 2011, in order to provide an updated "boat" roster for each club member at the June's meeting.

Let's set sail!

Elizabeth Beckmann
Commodore

ANNUAL DUES ARE NOW PAYABLE

If you have not paid your annual dues, please mail a check for \$40.00 payable to the Cruising Club of Charleston. The Mailing address is as follows:

The Cruising Club of Charleston
 P.O. Box 22664
 Charleston, SC 29413

You will not be getting a bill in the mail. This is your reminder!

CCC Main Meeting Minutes
 3/3/2011

Outgoing Commodore Mike Fauss brought 39th annual Change Of Watch to order at 7:50 PM. Webmaster Joel Arenson provided a video presentation of club events from the last year to entertain the club during dinner.

The Past Commodores were recognized with the following being present:

Carlton Poulnot	1980-1981
Steve Zwicky	1988-1989
Sara McAlister	1990-1991
Bob Withers	1992-1993
Keith Gannett	2003-2004
Rick McNaughton	2004-2005
Joel Arenson	2007-2008

Mike recognized the past year's officers and staff:

Vice Commodore	Elizabeth Beckmann
Treasurer	Steve Zwicky
Secretary	Eddie Whittington
Navigator	Carl Beckmann
Newsletter Editors	Mike and Joann Lape
Webmaster	Joel Arenson
Membership Chair	Sharon Barnett
Historian	Bill Prewitt

Mike recognized and thanked all the club members that helped with the events this year.

The February minutes were approved. The Treasurer's report was accepted.

Navigator Carl Beckmann gave the details of this month's cruise to Church Creek. He presented the 2010 club awards. The Most Cruises Award went to Calypso. The Longest Cruise was won by Sweetgrass who went about 2500 miles to Maine. Honorable mention for longest cruise went to Blue Horizon. 128 cruises were done by the club's boats last year which enters them into Cruiser's Drawing with each cruise. The Cruiser's Drawing was won by Sea Fever.

Mike read his poem which is a tradition for the outgoing Commodores. Mike presented the incoming Commodore Elizabeth Beckmann and turned the meeting over to her.

Elizabeth gave Mike his Past Commodore's Patch. Elizabeth installed the new officers and staff:

Vice Commodore	Paul Hensarling
Treasurer	Joann Lape
Secretary	Lynn Menches
Navigator	Carl Beckmann
Newsletter Editor	Jan Massey
Webmaster	Ed Geiger
Membership Chair	Eddy Sikes
Historian	Bill Prewitt

Elizabeth described a fun committee chair position that she is creating and asked for a volunteer.

Brian Hill gave a reported the success of this year's oyster roast. Brian and Keith Gannett, who led the committee this year, presented Lloyd Davis with a gift for being such a good host and doing much of the work behind the scenes. Elizabeth adjourned the meeting at 8:35. About 50 members were present.

Secretary,
 Eddie Whittington

March Cruise Report

The CCC fleet for the March, 2011 cruise to Church Creek was made up of two proud vessels crewed by four hearty souls – Lloyd and Shirley in "Condor" and Don Prevatte and his Yankee cousin from Pennsylvania, Charlie Peterson, in "Bright Star". Although the weather was a bit moist and windy, the anchorage was cozy, and the company it was great. Lloyd and Shirley were very gracious to host our get-together in "Condor" for chow and splicing the main-brace when Don discovered that the Dinty Moore beef stew he had slaved all day to prepare couldn't be heated up properly because "Bright Star's" propane system wouldn't deliver the gas to the stove (thank you Shirley for the warm-up). After supper we all told lies (I mean... "sea stories") about our brave nautical exploits (They just seem to get better with each telling.), and it's hard to say who spun the biggest yarn. The trip back on Sunday was a sleigh ride, with the tide pushing us and the genoa pulling us on a broad reach with the wind in the 20 -30 knot range (a bit tricky flying through Wappoo Cut and crashing back into the slips). All-in-all it was a terrific weekend except for the fact that we missed terribly all of you powder puffs who couldn't handle a little breeze and moisture.

Don Prevatte
Bright Star

Oh, No!!! No Host Boat!!!!

Since there were no volunteers to serve as Host Boat for the March cruise to Church Creek, the Steering Committee thought that it might be a good time to write up an article about "Host-Boating."

The Host Boat serves as our Happy Hour location at each monthly cruise. If the Host Boat owners think their boat is too small to handle people from 10-15 boats, they should coordinate with another boat for a raft up during Happy Hour. The owners coordinate with the Navigator to obtain the infamous "Liquor

Locker" prior to the cruise and also make arrangements to return it to the Navigator after the cruise. The Liquor Locker will be fully stocked when delivered to the Host Boat. (Translation: No Host Boat means- No Liquor Locker! Oh, no!!!) The Liquor Locker consists of a plastic crate that holds napkins, plates, cups (2 sizes), bug spray, swizzle sticks, plasticware, trash bags and some other necessary stuff. The all-important Cruise Log is also included, the the Host Boat should make sure that the Captain of each attending vessel signs it.

In addition to bringing the Liquor Locker to the cruise location, the Host Boat also provides ice. The normal quantity is 50 lbs in the Host Boat's own cooler(s). Even in warmer months 50 lbs should be sufficient. If not, most other boats attending probably have ice they would be willing to donate to the cause. The host boat is also responsible for providing the lemons (3) and limes (4) and pre-cutting before the Happy Hour commences. Host Boat owners should provide a receipt for the ice, lemons and limes to the CCC Treasurer for reimbursement.

The Host Boat raises the Happy Hour flag at 5:00 PM (1700 hrs) to signal the start of the festivities and for two hours club members/guests enjoy each others company. Happy Hour ends at 7:00 PM (1900 hrs) as members/guests return to their own boats for dinner and whatever! The Host Boat has not only the responsibility of returning the Liquor Locker but also of disposing the trash bag(s) from Happy Hour.

Members/guests have duties as well! Each boat should plan ahead for their own transportation to and from the Host Boat. Each boat should bring an appetizer to share with others. As far as what we bring, there are a couple of things to keep in mind:

- Whatever you bring, you should take back the leftovers and the serving dish when you leave. (This helps the Host Boat minimize the trash that has to be hauled back.)
- Keep the outside temperatures in mind--a mayonnaise-based dip in the hot August sun might give members/guests "unpleasant reminders" of Happy Hour!

Finally, we need to remember that we are guests on the Host Boat--they are inviting us to their home! And, they have volunteered to provide a location for one of the most enjoyable parts of our cruises, the CAMARADERIE!!! So, our shoes should be boat-appropriate, food/drink spillages are our own responsibility, and we should "hold it" for our own holding tank!

Carl Beckmann, Jr, *Palmetto Moon*.

Jan Massey, *R Boat*

MONTHLY CRUISE SCHEDULE 2011-2012

Date	Cruise Destination	Host Boat
March 5-6	Church Creek	TO BE DETERMINED*
April 9-10	Hamlin Sound	Makani
May 7-8	Steamboat Creek	TO BE DETERMINED*
June 4-5	Sandy Point/Bass Creek	MCYC/
July 9-10	Nowell Creek	Loy & Bert's Dock
August 6-7	Whiteside Creek	TO BE DETERMINED*
Sept 3-4	Annual Luau/Stono River	Florence & Tommy
Oct 8-9	Flagg Creek	TO BE DETERMINED*
Nov 5-6	Moise Island	Sea Fever
Dec 1	Annual Christmas	WLI Armory
Jan 7-8, 2012	MCYC	Joint CCC/MCYC
Feb 4-5, 2012	Annual Oyster Roast	Lloyd & Shirley's
Ocean Cruises (possible)		
Edisto Beach (May)		
Beaufort, SC		

*VOLUNTEERS ARE WELCOME!!



Enjoy being the center of attention? Have we got a job for you!

“Fun Committee Chair”

Seeking a person to coordinate the cruising club's annual functions: Luau, Christmas Party, Oyster Roast, and Change of Watch Dinner.

“Fun Committee Members”

Seeking club members to assist the Fun Committee Chair in the Cruising Club's annual functions. Volunteer for 1 or for all 4. This is a great way to be actively involved in the club, no boat required.

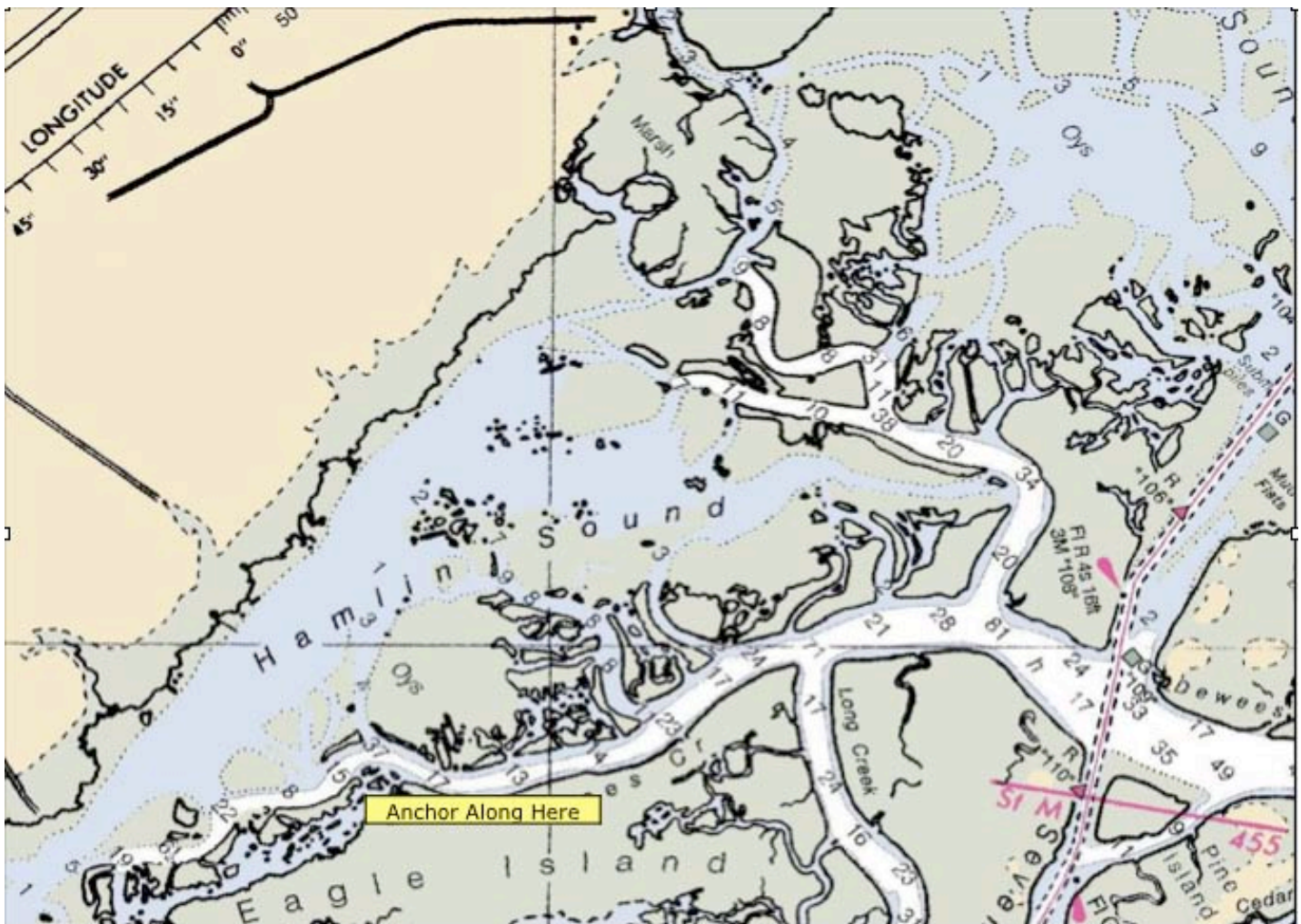
For more information contact the Commodore

SAIL PLAN - Hamlin Sound

From Charleston harbor, proceed north on the Intracoastal Waterway (ICW). Pass through the Ben Sawyer Bridge (type – swing, vertical clearance – 31 feet, contact bridge tender on channel 9). Note: On weekends and holidays, the span opens only on the hour from 9 AM to 7 PM. At all other times, it opens on demand. Proceed past the Isle of Palms to marker 110 which will be on your port side. Shortly past marker 110 turn to port into the center of Dewees Creek and follow Dewees Creek past Long Creek which will be on your port side. Once past Long Creek, continue to where the creek makes a gradual turn to the right and anchor in approximately 15 feet of water. Depending on the number of boats you may anchor anywhere after Long Creek. Host Boat is S/V *Makani*.

Tide Table - Hamlin Sound

Date	Sun	High	Low	High	Low
Saturday – 9 April 2011	Sunset – 1945	1234 +4.4	1824 +0.4	0055 +5.2	0714 +0.7
Sunday – 10 April 2011	Sunrise – 0657	1329 +4.5	1918 +0.5	0154 +5.4	0809 +0.7



From NOAA Chart No. 11518 – ICW Casino Creek to Beaufort River Side A

For illustration only. Not for navigation.