

SAIL PLAN – Clouter Creek

The February cruise will be the Annual Oyster Roast. Lloyd and Shirley Davis have once again graciously welcomed us at their home-site on Clouter Creek. You can reach their place either by boat or by car.

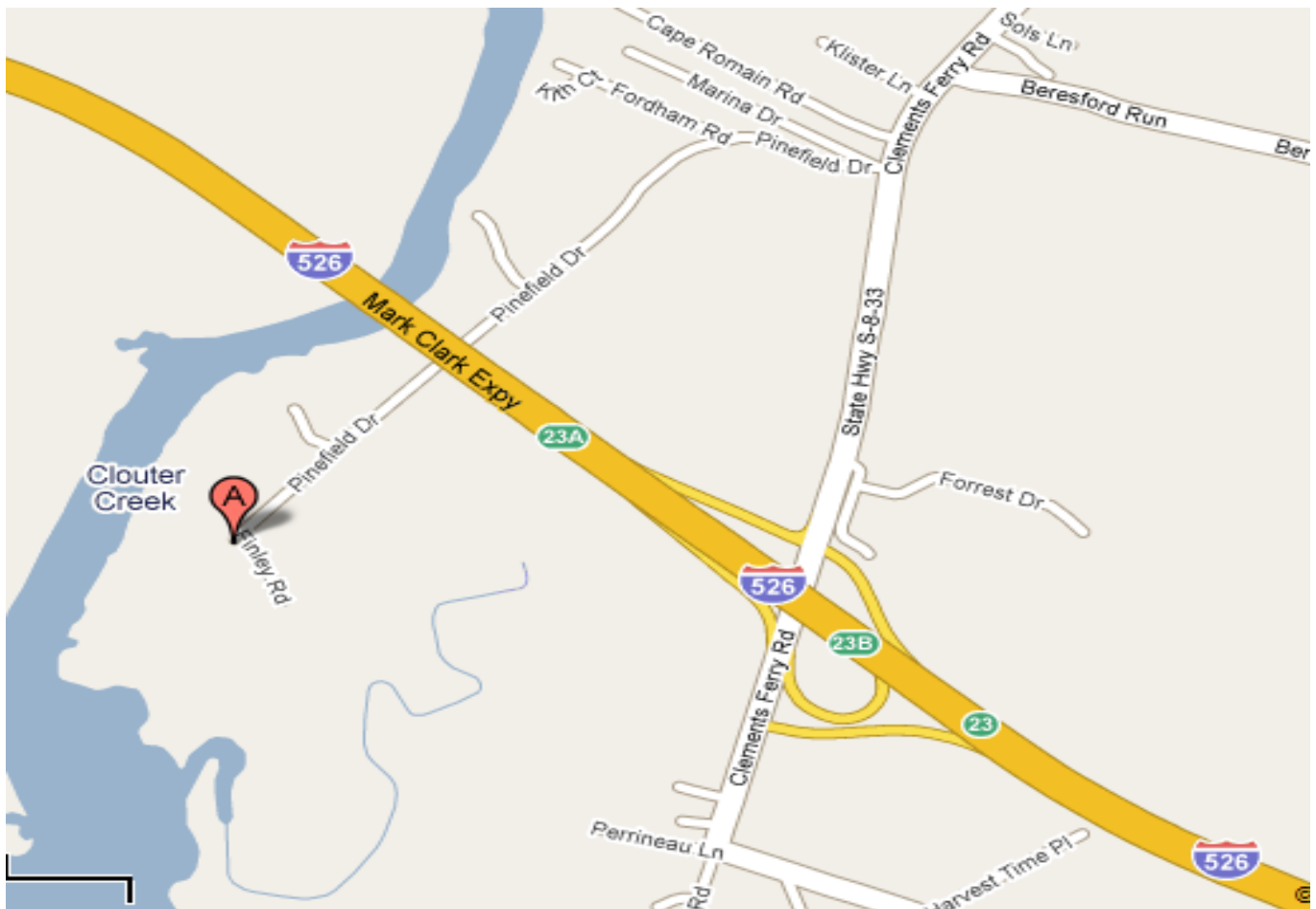
If you travel by car, take the Clements Ferry Exit off I-526 and proceed north. After a short distance (about a half mile), take the first left towards the Daniel Island Marina. **Pinefield Road will be on the left.** Follow this street South under the I-526 Bridge to Lloyd and Shirley's house. It will be on the right at 1150 Pinefield Road (see map).

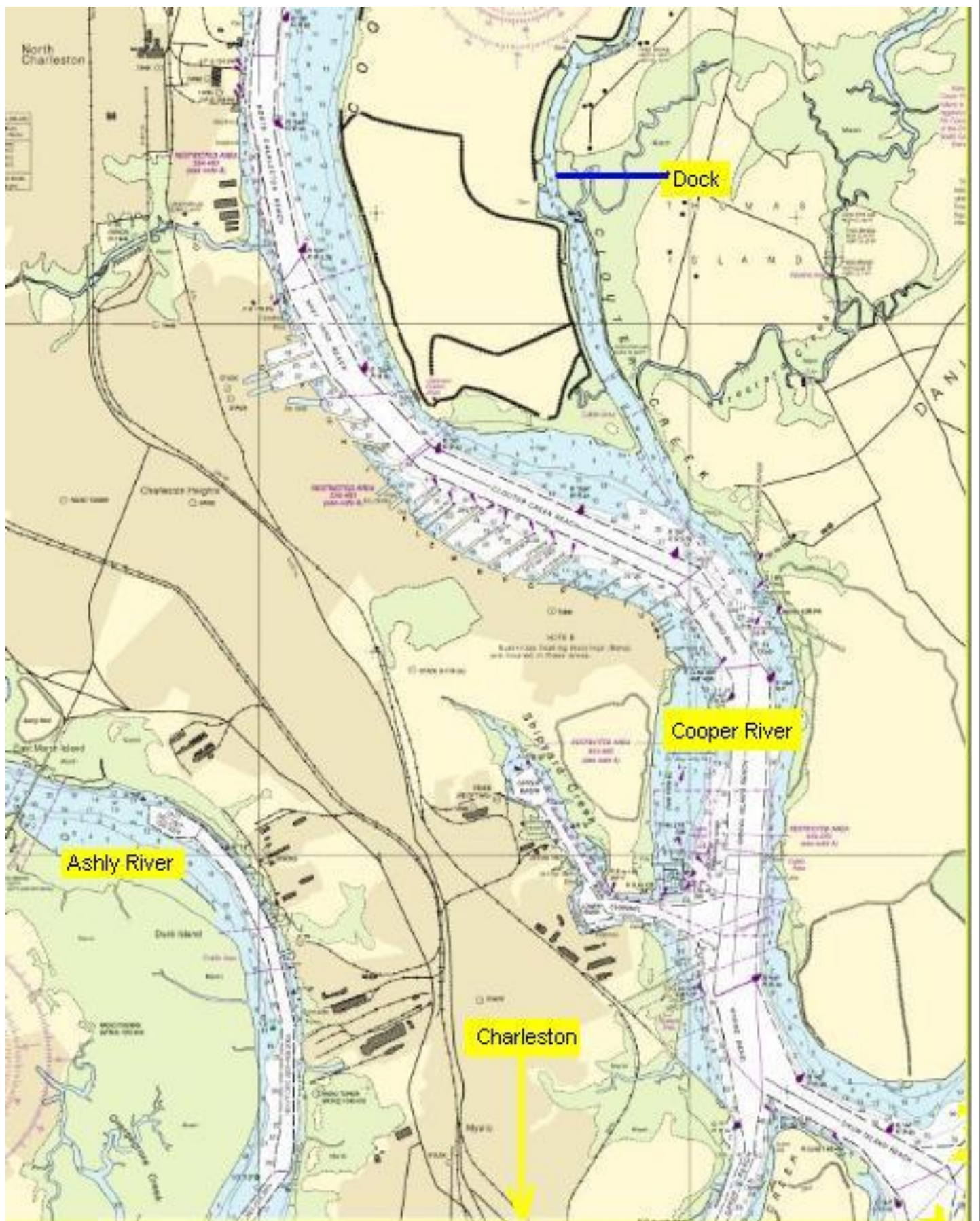
If coming by boat, travel up the Cooper River to R-50. Pass R-50 on your starboard side when entering Clouter Creek. Stay to the right side when entering the creek, as it is a little thin on the left. Continue on up the middle all the way up to Lloyd and Shirley's dock. Their dock is the third dock on the right. There is a good anchorage just before you reach the dock and about forty feet of docking space at the dock.

Tide Table

Date	Sun	High	Low	High	Low
Saturday – 4 Feb 2012	Sunset – 1755	0459+5.0	1121+0.4	1723+4.3	2322-0.2
Sunday – 5 Feb 2012	Sunrise – 0712	0549+5.2	1207 +0.1	1811+4.6	0011-0.5

Driving Map to Lloyd & Shirley Davis's House





For illustration only. Not for navigation.